

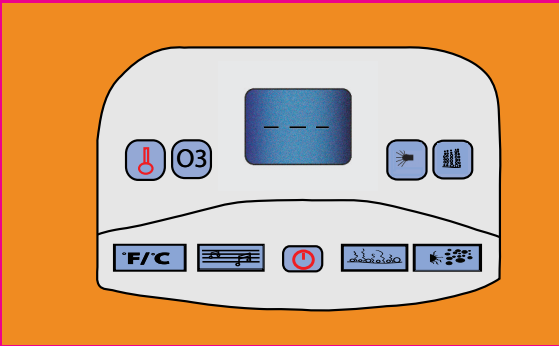


## The Topside Controls

Think of your spa as you would a computer. The spa pack is like the hard drive and the topside controls are like the mouse and keyboard. Your computer is connected to a power source, you touch buttons, and it performs only those actions you request. Like a keyboard, each button on the control pad tells the spa pack to perform an action. Unlike your computer, your spa should always be connected to the GFCI with the power turned on.

**Never turn off the GFCI unless the spa is being serviced or you are draining all of the water.**

## Topside Controls for Spas with One and Two Pumps



## Topside Power Controls

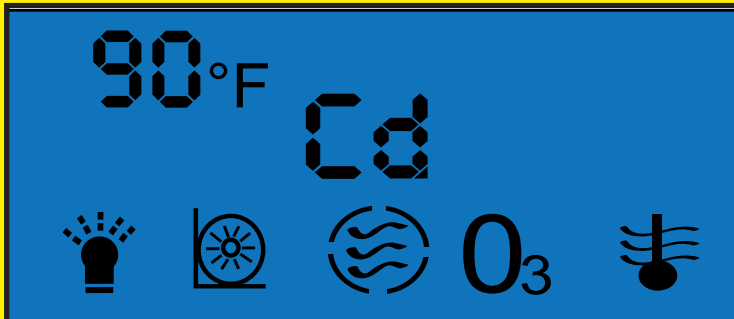


Great Escape Spas are manufactured with topside controlled power override. After the spa is filled and your electrician has connected the spa pack from the GFCI, turn the GFCI on. If properly connected, the LED will emit a soft glow and will display “- - -”. Press this button, the LED will brighten and the clock and current water temperature will display.

Pressing the button again will power off every running component at once rather than having to touch each button to power them off individually. With the GFCI still on, the LED will display the current water temperature only.

**Under normal conditions, the spa should only be disconnected from the GFCI when you are draining the spa.**

## The Fully Illuminated LED Display





**Pressing this button on the topside controls illuminates the current water temperature on the LED display.**

**90°F**

**Controlling the water temperature of the spa.**

Pressing this button allows you to control the water temperature. To set the spa controls so they maintain the desired temperature, press this button, the backlight will brighten and the current water temperature will flash. While the current temperature is flashing, press and hold the button down until the desired temperature is reached.

To decrease the temperature, press the button, the backlight will brighten and the while the display flashes the current temperature, hold the button down until the desired temperature is reached. If the current temperature setting is below 104°F, continue holding the button until the display cycles to the maximum temperature of 104°F and begins at the minimum temperature of 56°F until it reaches the new temperature setting. For example, if your spa controls are set to 102°F and you wish to reset the temperature to 100°F, hold the button down as the LED displays the temperature from 102°F to 104°F then from 56°F until it reaches 100°F. The water temperature setting is now 100°F. The heat icon will flash when the water temperature is higher than the setting. The read out on the topside controls displays the current water temperature. Your Great Escape Spa is designed to protect against freezing. If you fill your spa during very cold weather and the water used to fill the spa is 34°F, that is the temperature that will be displayed on the LED. Your spa is not equipped with a cooling system so if it is very warm outside and the water in the spa reaches temperatures above 104°F, your control pad may display a temperature higher than 104°F. The heater will only operate when it is necessary to maintain the programmed settings.

To reduce energy consumption, simply lower the water temperature. When you are ready to use the spa, reset the spa to the desired temperature. In most instances, the water temperature will climb from the low temperature of 56°F to the high temperature of 104°F within about 8 hours depending on the outside temperature. In very cold weather, the spa make take longer than normal to reach the desired temperature. Keeping the cover on the spa when not in use will reduce the time to heat the water and will help prevent heat loss.

**03**

**Pressing this button on the topside controls illuminates the Ozone Generator indicator on the LED display.**

**O<sub>3</sub>**

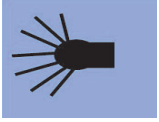
**Controlling the Ozone Generator**

*for spas equipped with this option*

The Ozone Generator in your Great Escape Spa was designed with its own power switch so you can control when and for how long the Ozone Generator creates Ozone. Press this button once to turn the Ozone Generator on. Press this button again to turn the Ozone Generator off. If your spa does not have an Ozone Generator, pressing this button will not do anything. Ozone is a gas that will effectively sanitize, kill bacteria and other microorganisms while reducing maintenance time and chemical costs. Ozone generators are effective but do not create residual sanitizers. Additionally Ozone dissipates quickly, so the Ozone Generator does not eliminate the need for chemicals in your spa.

Ozone enters the spa from a small jet in the footwell. When the Ozone generator is on, very small bubbles will come from this jet. If there are no bubbles coming from the jet, press the button once to be certain it has been powered on and check to see that the jet is open. If there are still no bubbles, and your spa was equipped with an Ozone Generator at the time of purchase, please call Technical Support at 877.722.4097 for assistance.

Technical support is available Monday through Friday from 8:30 am to 5 pm EST.



**Pressing this button on the topside controls illuminates the Light indicator on the LED display**



### Controlling Light Functions

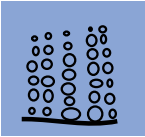
including 9 Color LED & Fiber Optic Lights for spas equipped with this option

Every Great Escape Spa comes with an underwater light. To turn the light on, press the button once. To turn the light off press the button a second time.

If your spa came with the optional Nine Color LED light, press the button to turn the light on. The lights will begin rotating slowly through all nine colors. To stop the rotation of colors to a single color of your choice, press the button again during that color's cycle. For example, if you want the light to be "blue" press the button while the light is "blue" and the rotation will stop and the underwater light will be blue. To turn the light off, press the button again.

Fiber Optic lighting is a row of small lights just above the waterline. These lights work in tandem with the colored lights. If the Nine Color LED light is installed, the Fiber Optic lights will be the same color as the large underwater light. The Fiber Optic lights should never be submerged. If the water line goes over the fiber optic lights, immediately drain some of the water from the spa so the lights are once again below the waterline.

**Damage to the Fiber Optic Lights caused by submersion is not covered under the spa warranty.**



**Pressing this button on the topside controls illuminates the Pump # 2 indicator on the LED display**



### Controlling the Second Pump

for Spas equipped with two pumps

Depending upon the Great Escape Spas you purchased, your spa may be equipped with both a primary and secondary pump. If your spa has only one pump, touching this button will not do anything. If your spa model included a secondary pump, you can turn the pump on by touching this button once. To turn the pump off, touch the button a second time. The secondary pump is a single speed pump. Since it is a single speed pump touching the button will either turn the pump on or turn the pump off.

The pumps on your new Great Escape spa are designed to pump water, not air. If the spa is not filled properly upon initial start up and upon subsequent cleanings, the plumbing lines will be filled with air and not water. If air is trapped in the lines, when the spa is powered on the pumps will lock to protect to major components. If your spa is properly filled and functioning as it should be, when you touch this button water will be forced thru without surging. If no water comes through the jets, if you hear the pumps "hum", or if water surges, touch the button to turn the pump off and refer to the instructions in the owner's guidebook to bleed air from the pump.



**Pressing this button on the topside controls will NOT change the LED display**

### Controlling the Temperature Settings

Pressing this button will lock the heater settings on the desired temperature. Each time you want to adjust the temperature settings, press this button while the desired temperature is flashing on the LED display. Pressing this button will hold the new setting until you make another adjustment. Any adjustments to the temperature that are not locked by pressing this button will be temporary adjustments.



For example, the preset temperature is locked at 100°F. While in the spa, you can increase the temperature to 104°F for that visit by pressing the temperature button. Since you don't want the temperature to remain at 104°F all the time, don't press this button to lock in the new temperature. The spa will quickly heat to 104°F for only that spa visit. Once the spa cools, it will heat only to 100°F, the preset locked temperature setting.

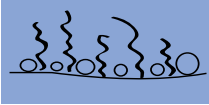


**Pressing this button on the topside controls illuminates the Music indicator on the LED display**



If your Great Escape Spa an audio/video package, this button will control the power. Press this button once to turn on the built in speakers. Press the button a second time to turn the built in speakers off. This button is used only to control the power. The audio and video components must be turned on and off independently. Volume is also controlled on the device. If the LED displays "CD" the speakers will work if the device is on and the volume is turned up on the device.

If you do not have an Audio/Video Package, pressing this button will do nothing

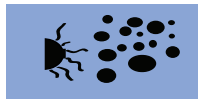


**Pressing this button on the topside controls illuminates the Heater indicator on the LED display**



### Controlling the Heater

Press this button once to turn the heater on and again to turn it off. It is generally better to reduce the temperature setting than it is to power off the heater. If the heater is powered off, it will turn itself on when the water temperature reaches 56°F to protect itself from freezing. The icon on the LED display will be solid while heating the water to the preset temperature. The icon on the LED display will flash when the water temperature is above the programmed temperature setting.



**Pressing this button on the topside controls illuminates the speed of the primary pump on the LED display**

### Controlling the Primary Pump

Pressing this button controls the primary pump. The primary pump is a two speed pump. Press the button once to turn the pump on low speed. The LED will display a single wave in a circle to indicate the pump is on low speed. Press the button a second time to turn the pump on high speed. The LED will display three waves in a circle to indicate the pump is on high speed. Press the button a third time to turn the pump off. When the pump is off, the icon will not be displayed. Low speed provides limited water movement which is ideal for reducing energy consumption but inadequate for hydrotherapy purposes. While the water is heating, the pump operates on either high or low speed. When the water temperature has reached the programmed setting, it operates as a high speed pump. To reduce the flow and force of the water for a more relaxing spa experience, simply reduce the air flow or divert the water to another part of the spa shared by this pump using the air and diverter valves, located on the acrylic surface. For more information about air and diverter valves, please refer to your owner's guidebook.

The pumps on your new Great Escape spa are designed to pump water, not air. If air is trapped in the lines, the pumps will lock to protect to major components. If your spa is properly filled and functioning as it should be, when you touch this button water will be forced thru the jets without surging. If no water comes through the jets, if you hear the pumps "hum", or if water surges, touch the button to turn the pump off and refer to the instructions in the owner's guidebook.



**Low**



**High**